

# المصرية النادرة Extraordinary Cart



EXTRAORDINARY CART

Headquarters: Riyadh Business Front, Building number S 4

contact: Info@extraordinarycart.com.sa - 920033466

website: www.extraordinarycart.com.sa/en/

## H2



# WHAT ARE THE FEATURES

- 1 Pedals**  
Integrating acceleration, brake and parking together. Braking distance is adjustable.
- 2 LAMINATED WINDSHIELD**  
UNIQUELY RESISTANT TO THE ELEMENTS AND WILL NOT RUST OR CORRODE OVER TIME
- 3 LED HEADLIGHTS**  
HIGH BEAM-LOW BEAM-DAYTIME RUNNING LIGHT-TURN SIGNALS
- 4 WHEEL**  
14" ALLOY WHEEL RIMS WITH COLOR MATCHING
- 5 INJECTION MOULDED CANOPY**  
UNIQUELY RESISTANT TO THE ELEMENTS AND WILL NOT RUST OR CORRODE OVER TIME
- 6 STORAGE**  
AUTOMOTIVE STYLE DASH WITH ROOM FOR MORE ACCESSORIES
- 7 STEERING WHEEL**  
AUTOMOTIVE, MULTIFUNCTIONAL STEERING WHEEL
- 8 USB PORT**  
USB CHARGERS KEEP YOU CHARGED ON THE GO
- 9 DIGITAL SPEEDOMETER**  
WITH EXCELLENT LED WARNING LIGHTS, GAUGES BATTERY POWER, AND SAVES RIDE TIME AND LENGTH
- 10 REAR FLIP SEAT**  
THE REAR SEAT ALSO FLIPS OUT TO REVEAL A RUGGED BED TEXTURE AND SPACE FOR MOVING YOUR FAVORITE GEAR
- 11 COMFORT**  
UNIQUE STYLE, COMFORT GRIP, AND ENOUGH LEG ROOM TO ENJOY YOUR RIDE AND DRIVING EXPERIENCE
- 12 SEAT**  
WIDEST, MOST ERGONOMIC CONTOURED SEAT





## GIVES YOU QUALITY AND RELIABILITY

The EXOC-H2 electric tourist bus that comes with different numbers of seats is the perfect bus to transport people. The modern design of closed glass window is liked by most customers. It has a great Air conditioner system. New digital display panels show the speed and battery capacity easily. Good choice for visitors, guests and staff. The EXOC-H2 electronic bus has 72 volt control systems. The 72 volt 7.5kw. Bigger motor is good for speed and climbing requirements.





# ***LED LIGHTING***

Our personal transportation vehicles come standard with LED lights: high beams, low beams, daytime running lights, turning signals and brake lights for a brighter ride. Our lights are more powerful with less drain on your batteries, and deliver a 2-3 times wider field of vision than our competitors, so you can enjoy the ride worry-free, even after the sun goes .

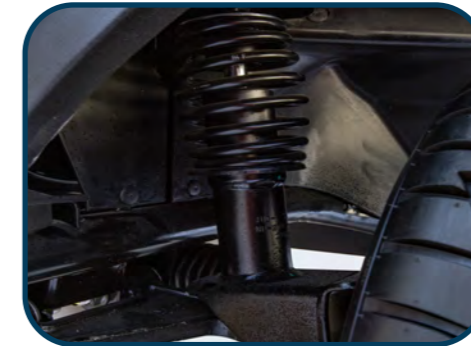


# **LAMINATED WINDSHIELD**

With a rotary switch, the tilt angle of the laminated windshield is easy to be adjusted. Then just enjoy the cool breeze skating through tilted windshield.

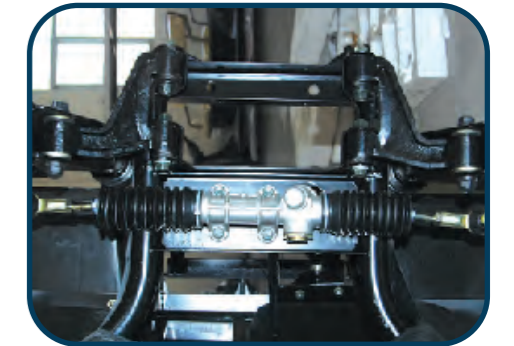


# ***FOUR-WHEEL STRUCTURE***



## **Shock absorber**

Adopting automobile steering system design, independent suspension system



## **Suspension system**

Independent shock absorber Make people more comfortable



## **SMOOTH RIDE**

Our new tires are smooth and quiet With a sleeker tread



## **Chassis**

High tensile steel welding structure, and anti-rust performance

# DETAILS



## Dual USB Port

With a dual USB port on your carts, you can provide golfers that added touch of keeping their phones charged



## Explicitly Digital Speedometer

With Excellent LED warning lights, Gauges battery power, and Saves ride time and length.



## STORAGE COMPARTMENT

dual-sized storage compartment, room for more items like keys and mobile devices.



## 1-SEAT SLIDE BAR

Move the seats forward or backward.

## 2-BACKREST TILT

Adjust the tilt angle of the backrest. (Customized Feature)

## 3-RETATABLE ARMREST

It can rotate in 90 degree and provide an ergonomic support for your cantilever elbows.

## 4-SAFETY BELT

with three-point safety belts in the front seats and two-point safety belts in the rear seats. (Customized Feature)



## ACCELERATOR / BRAKE PEDAL

The accelerator is on the right. The brake is on the left.



## FOG LIGHTS

Custom Fog Lights by Fog lights reduce glare and illuminate the road right in front of your vehicle



## CANOPY

Provides protection against the sun and rain. Its color is consistent with the vehicle body.

# CUSTOMIZE



## Luxury Chair



## Battery Tray



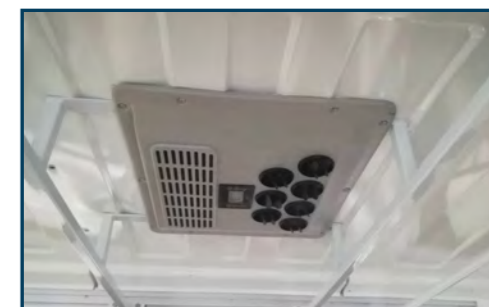
## Music Player



## 6-8-12 Volt batteries



## Solar Panels



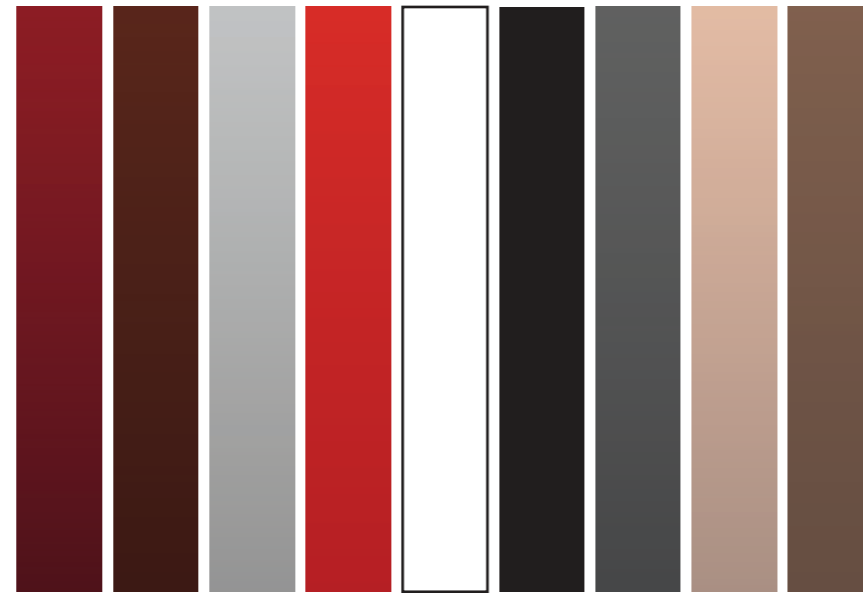
## Adaptation

# COLOR OPTIONS

## BODY COLORS



## LEATHER SEATS COLORS



# DIMENSIONS

Power						
<b>Motor</b>	<b>Batteries</b>	<b>Charger</b>	<b>Transaxle</b>	<b>Overall Size</b>	<b>Ground Clearance</b>	<b>Tread Distance</b>
72v/7.5kw AC system	6v*12 Maintenance free Battrey	48 Volt On Board Charger OBC Computer Intelligent	16:01	4960*1480*2100mm	180 mm	Front1305/ rear 1325tmm
<b>Net Weight</b>	<b>Loading</b>	<b>Forward speed</b>	<b>Braking dist</b>	<b>Turning radius</b>	<b>Climbing Ability</b>	<b>Maximum Mileage</b>
1190kg	14 People	30 km\h	4 m	5.5 m	20 %	120 km Per-Charge
Steering & Suspension						
<b>Steering</b>	<b>Front Suspension</b>		<b>Rear Suspension</b>		<b>Turning Radius</b>	
Self-compensating 'Rack & steering Pinion'	Independent front suspension		Independent rear suspension		5.5 Meters	
Brakes						
<b>Brakes</b>		<b>Park Brake</b>		<b>Braking Distance</b>		
Self-Adjusting, Four Wheel discs brake + EMB		Foot actuated, 3-position		Less than 6 Meters		
Body & Tires						
<b>Body and Finish</b>	<b>Tires</b>	<b>LxWxH</b>	<b>Wheelbase</b>	<b>Ground Clearance</b>	<b>Tread</b>	
Painted TPO	(205x50 -10 ) Tubeless	2400*1200*1800 mm	16:01	170 mm	Front 900/Rear1000mm	
<b>Total Vehicle Weight</b>		<b>Frame Type</b>	<b>Floor</b>		<b>Loading</b>	
1190 kg		Aluminum	Resin synthesis anti-slip rubber mat		14 Passengers	





Click Down To

CALL US



920033466

VISIT US



Extraordinarycart.com.sa

FOLLOW US

